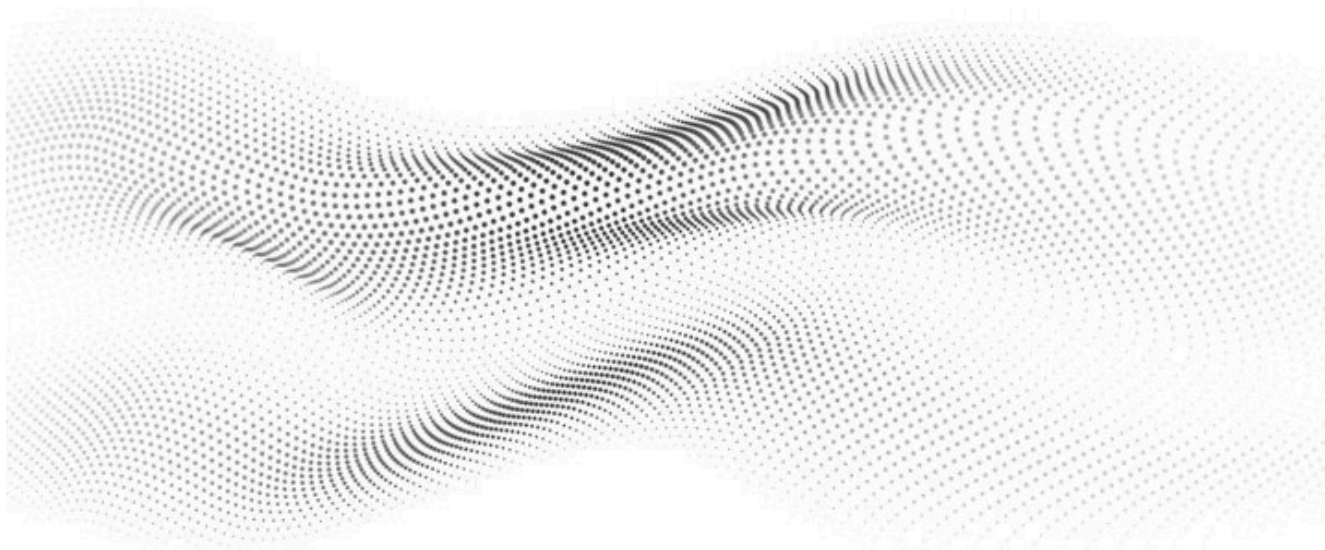




Your safety come first

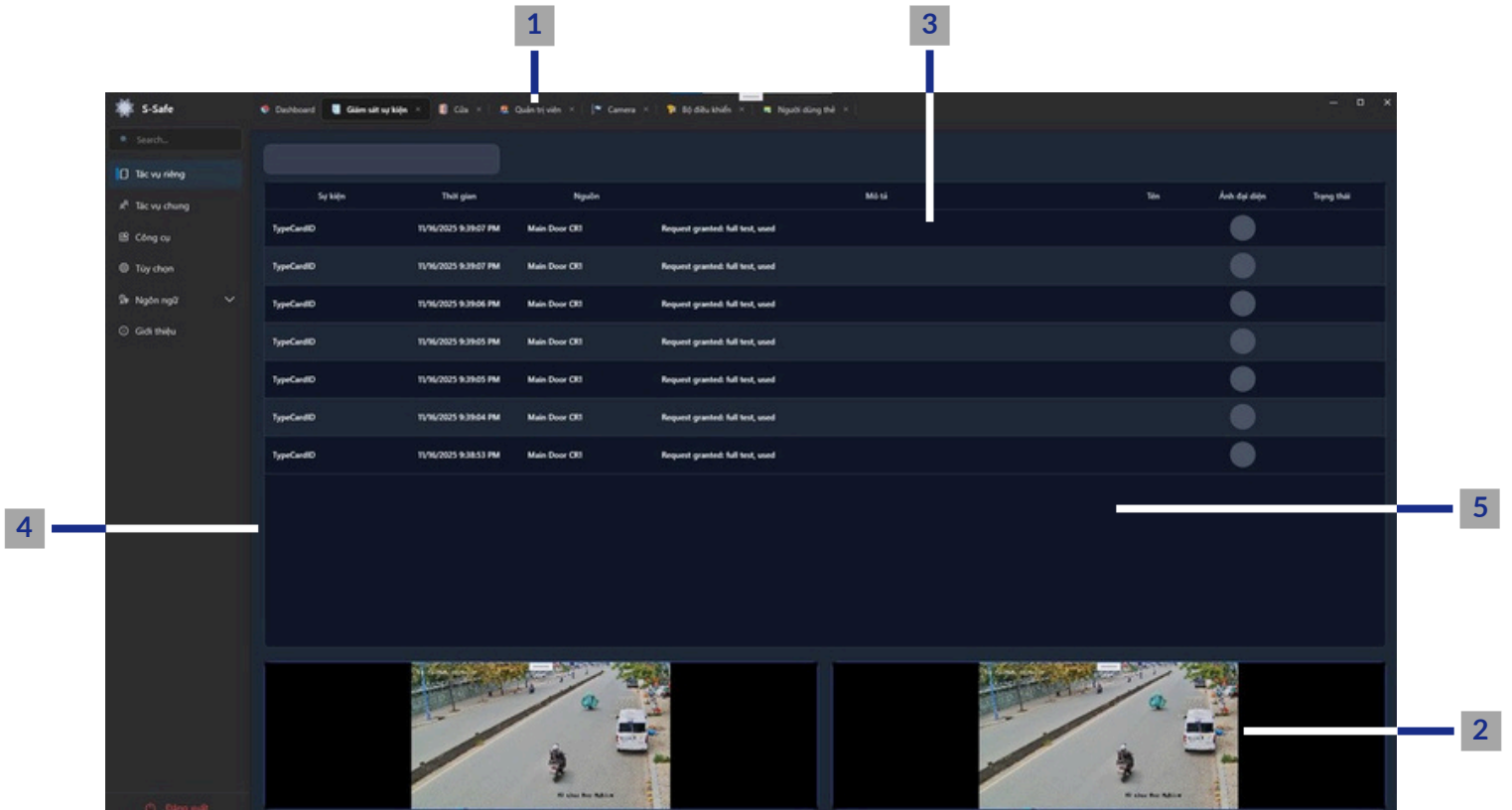


S-Safe is a centralized security management platform based on a client-server architecture, integrating access control, monitoring, and alerting systems into a single, intuitive, and flexible solution. This solution helps businesses improve operational efficiency, monitor in real-time, make quick decisions, and proactively respond to any security situation.

Management platform

S-Safe provides a unified monitoring interface, allowing operators to track the status of all events, equipment, and cameras on a single, intuitive screen. This optimizes visibility, shortens response times, and enhances security.

With its synchronized interface, users can monitor device status, control entry/exit events, authenticate cardholder information, and synchronize live camera footage as soon as an event occurs. S-Safe ensures seamless information connectivity.



1 Multitasking monitor

The S-Safe monitoring interface allows for multiple tasks to be performed simultaneously: viewing ongoing events, reviewing recent history, or switching tabs between different modules. This helps operators quickly grasp any emerging activities and return to their previous work immediately.

2 Event-based camera synchronization

Each access control event is linked to the corresponding live camera feed displayed below the interface. When an entry or exit event occurs, the camera at that door automatically appears, allowing real-time visual verification without any manual action.

3 User authentication

At each event, S-Safe displays the user's profile photo and cardholder information, allowing a direct comparison between the registered data and the camera image at the time of entry or exit. This helps quickly detect anomalies such as card sharing or impersonation.

4 Easy to operate

The interface is designed to be simple and consistent across modules, with clear status colors. It uses a two-layer layout (events on top, video below) and supports quick actions like expanding images, viewing fullscreen, or switching between multiple cameras.

5 Dynamic dashboard

All actions related to an event—viewing details, opening the camera, or monitoring door status—are updated directly on the dashboard. When an operator selects an event, all relevant information is automatically displayed, reducing manual steps and enabling faster response in urgent situations.

Feature list

Access Control

Controllers

Readers, Doors

Flexible Schedule Configuration

Access Rules Definition

Multi-credential: Card, PIN

Biometric authentication (FaceID)

Regional Management

Construct the physical spatial structure (Building, Floors)

Integrate floor plan (Map) management

Locate devices (doors, cameras, etc) directly on the map

Manage alarms and events by zone

Elevator

Manage and control the elevator system

Set up individual or group permissions

Apply access rules

Integrate reader devices and surveillance cameras

Real-time monitoring and retrieval of event logs

Visitor

Manage visitor information

Assign temporary access credentials

Control and restrict access to specific areas

Link visitor information with internal user information

Store activity history and retrieve event reports

Monitor

Real-time monitor device status (doors, controllers)

Display a list of events (Live Event Viewer)

High-performance event-driven architecture

Visual authentication by linking events to video

Displays event alert pop-ups

Cardholders

Manage cardholder information

Manage restrictions (assign, revoke, deactivate cards)

Group cardholders

Assign access rights (individual or group)

Systems & Security

Client-Server architecture (workstation - server)

User authentication system (Operator)

Manage user permissions in detail through permission groups (Roles)

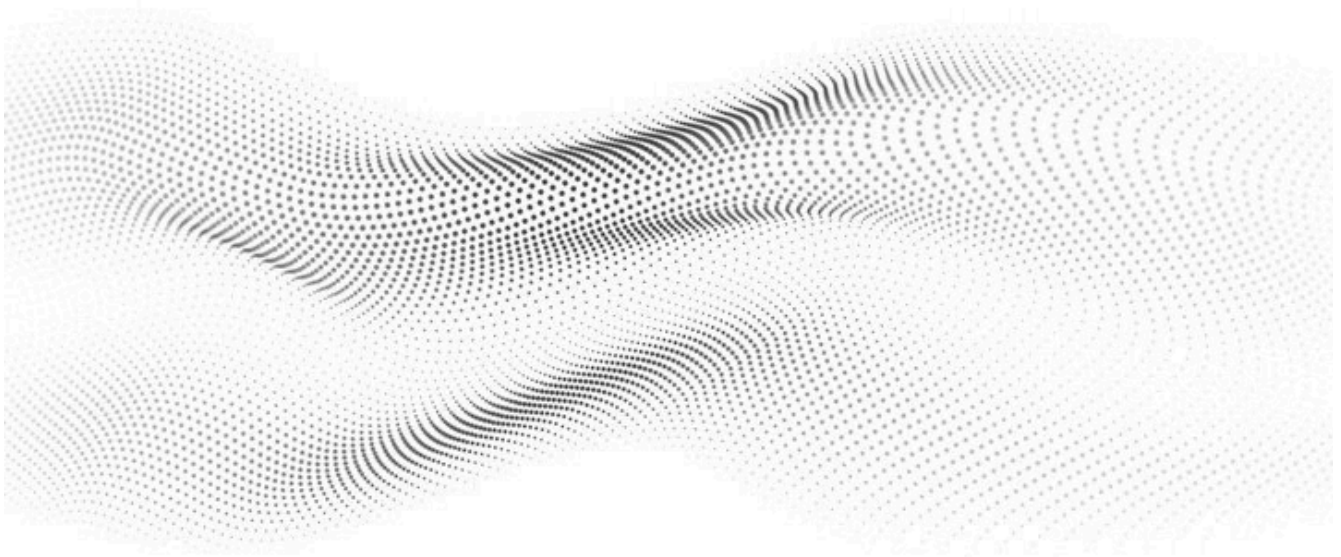
Record system logs (Audit Log)

Retrieve and filter system logs (by time, user, event type)

Backup and restore the database

Secure your backup files with encryption

Software license management



Leading in Physical Security Solution

www.smttech.com.vn | sales@smttech.com.vn | (+84) 975 389 729
21, Đường Phạm Tu, Sunrise C, KĐT The Manor Central Park,
Hoang Mai, Hanoi, Vietnam